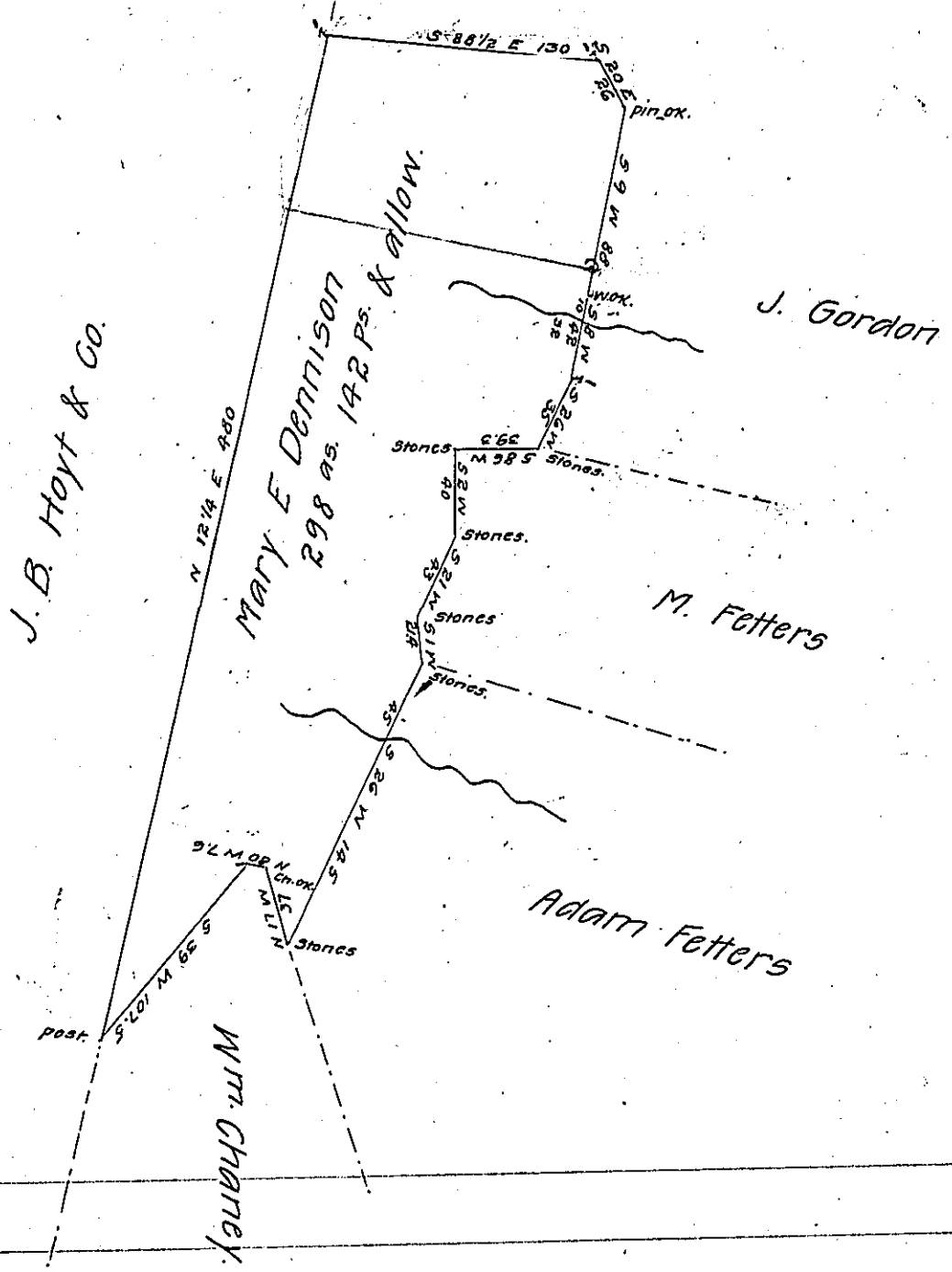


FORM NO. 1.



A draft of a tract of land, situate on the West side of Tussey's Mountain in Southampton twp Bedford Co Pa surveyed April 14" & 16" 1879 in pursuance of a warrant granted to Mary E Dennison.

Walter F Moore

To A. K. Dunkel  
Sec. of Int. Affairs

Note The above survey is a part of the Elizabeth Porter Improvement, Surveyed in Oct. 1850 by Patrick Donohoe.

Examined and approved March 31, 1882.

F. B. Fluck. C.S.

IN TESTIMONY that the above is a copy of the original remaining on file in the Department of Internal Affairs of Pennsylvania, made conformably to an Act of Assembly approved the 16th day of February 1833, I have hereunto set my hand and caused the Seal of said Department to be affixed at Harrisburg, this eleventh day of November 1907.

*Henry Howard*  
Secretary of Internal Affairs.